



# Theory of Change and standardised indicators

## Matra Government to Government programme

The Matra Government to Government (Matra G2G) subsidy programme aims to:

- contribute to peaceful and inclusive societies for sustainable development;
- provide access to justice for all; and;
- build effective, accountable and inclusive institutions in line with Sustainable Development Goal 16 (SDG 16).

This document contains:

- 1) the Theory of Change (ToC) that outlines how we expect programme activities to result in long-term impact.
- 2) the standardised indicators for this impact.

We use this document to:

- give guidance in the design of projects and consequent monitoring, evaluation and learning (MEL) strategies;
- ensure that project designs are in line with the Matra G2G goals;
- warrant monitoring of the programme implementation progress as a whole.

### **Figure 1: Theory of Change**

In figure 1, the ToC outlines how we expect programme activities to result in this long-term impact. Outcomes, outputs and activities may vary depending on the specific Matra G2G project and context.

→ **In your proposal, specify how your project will contribute to achieving the ToC's desired long-term impact.**

### **Figure 2: Standardised indicators**

Figure 2 at the bottom of this document describes the standardised indicators for all Matra G2G projects.

→ **Include these indicators in the overall monitoring, evaluation and learning (MEL) strategy of your proposal.**

You may add them to the project-specific outcomes, outputs and indicators.

We expect you to report on all indicators each year, to the extent possible and applicable.

# ToC Matra

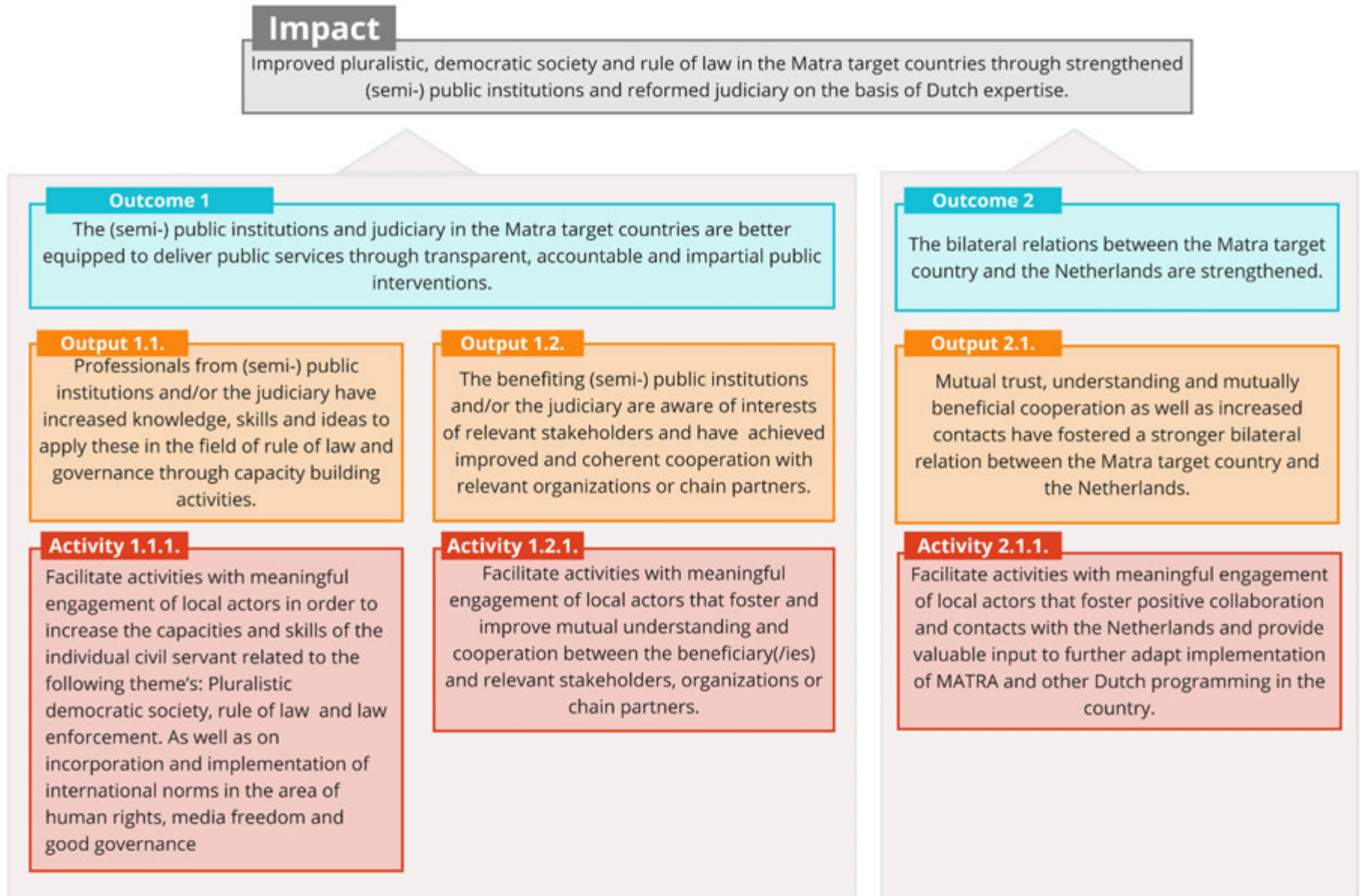


Figure 1 Matra G2G Theory of Change

	Indicator	Description	Methodology
1.1.1.1	Improved skills, knowledge and ideas	<p># people (sex-disaggregated) trained in the field of democratisation, governance and rule of law</p> <p># of people (sex-disaggregated) indicating to have an increased knowledge, ideas and skills that are applicable to their work</p> <p># of people (sex-disaggregated) indicating they have applied their new knowledge, ideas and skills that are applicable to their work</p> <p>What average score (1 lowest – 10 highest) do the project participants give their satisfaction with the project's activities?</p>	Quantitative
1.1.1.2	Localisation	<p>If applicable, to what extent does the project contribute to meaningfully engaging local actors? By this, we mean engaging them in the whole process of designing, implementing, monitoring and reviewing policies and programmes.</p> <p>In %, how much of the total budget has been spent in the Matra target country(/ies)?</p> <p>Of the total number of activities, how many have been implemented in rural and urban areas respectively?</p>	Qualitative + quantitative
1.2.1.	Cohesion	To what extent does the activity contribute to improved collaboration among relevant organisations across divides or chain partners in the target country(/ies)?	Qualitative
1.2.2.	Institutional capacity	To what extent and how has the project improved the beneficiary's(/ies') performance? Name concrete results on developed processes and products. Describe how sustainable these results are.	Qualitative
2.1.1.1.	Bilateral relations	To what extent have bilateral relations between the Netherlands and the target country been strengthened? Describe how.	Qualitative
2.1.1.2.	Adaptive programming	Which insights from the project's activities can strengthen Dutch diplomacy, policies and Matra programming at MFA <sup>1</sup> /RVO <sup>2</sup> ?	Qualitative

Figure 2 Standardised indicators for Matra G2G projects

<sup>1</sup> The Netherlands Ministry of Foreign Affairs

<sup>2</sup> Rijksdienst voor Ondernemend Nederland (The Netherlands Enterprise Agency)