



> Retouradres Postbus 40225 8004 DE Zwolle

**Rijksdienst voor  
Ondernemend Nederland**  
Team Visserijregelingen

**Bezoekadres**  
Prinses Beatrixlaan 2  
2595 AL Den Haag

**Postadres**  
Postbus 40225  
8004 DE Zwolle  
www.rvo.nl  
T 088 042 42 42  
VR@rvo.nl

Date: 1-11-2024  
Subject: Notification of Real Time Closure: RTC\_NL\_5\_2024

Dear Sir/Madam,

We have received a report of the European Control Fisheries Control Agency (EFCA). This report has consequences for fisheries in the North Sea. In this letter, we inform you what these consequences are.

**Onze referentie**  
HH/VIR\_HM\_2024017

#### **Notification for the closure of an area (RTC) in Dutch waters**

We close an area, Real Time Closure (RTC), in the Dutch waters of the North Sea for exceeding the catch trigger level of Whiting. This area will be closed for all fisheries except for fisheries with the following fishing gear:

- Pelagic trawls, purse seines, driftnets and jiggers targeting herring, mackerel, and horse mackerel;
- Pots;
- Scallop dredges;
- Gillnets.

#### **Findings of the last haul inspection on the 30<sup>th</sup> of October 2024**

On the 30<sup>th</sup> of October 2024 at 8:10 UTC, a last haul inspection has taken place at position 52°54.7 N; 004°32.1 E. The results show that the total share of juvenile whiting was 95%. This share exceeds the 10% catch trigger level for juveniles.

#### **Duration of closure**

The area (RTC\_NL\_5\_2024), see image and coordinates below) is closed for a period of 21 days, starting on 2 November 2024 at 00:00 UTC, until 23 November 2024 at 00:00 UTC. After that, the RTC will end automatically.

The RTC is located in the North Sea, ICES-area 27.4.c, in the fishing zone, consisting of the following coordinates:

**RTC\_NL\_5\_2024**

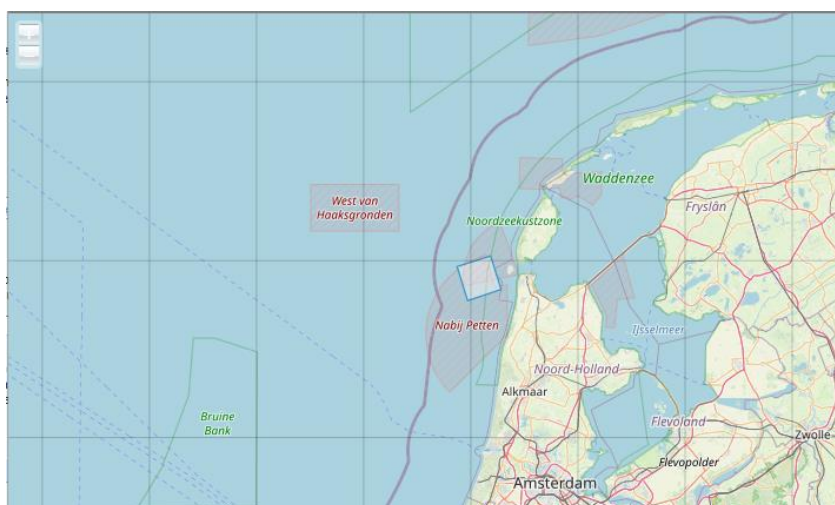
4,4864017 52,8881738  
4,6427751 52,9193163  
4,5912650 53,0139011  
4,4346087 52,9826523  
4,4864017 52,8881738

**Rijksdienst voor  
Ondernemend Nederland**

**Datum**

**Onze referentie**

HH/VIR\_HM\_2024017



**More information**

I hope to have informed you sufficiently. Do you have any questions? You can find more information about RTCs on the website of RVO: [Real Time Closures in the North Sea](#), and in the [Commission Regulation \(EU\) No 724/2010](#).

For further questions, you can contact us at [vr@rvo.nl](mailto:vr@rvo.nl). Or call us at: +31 88 042 42 42.

Yours Faithfully,

On behalf of the State Secretary for Agriculture, Fisheries, Food Security and Nature:

Jessie Janssen  
Team Manager Fishery Regulations Department  
Netherlands Enterprise Agency (RVO)